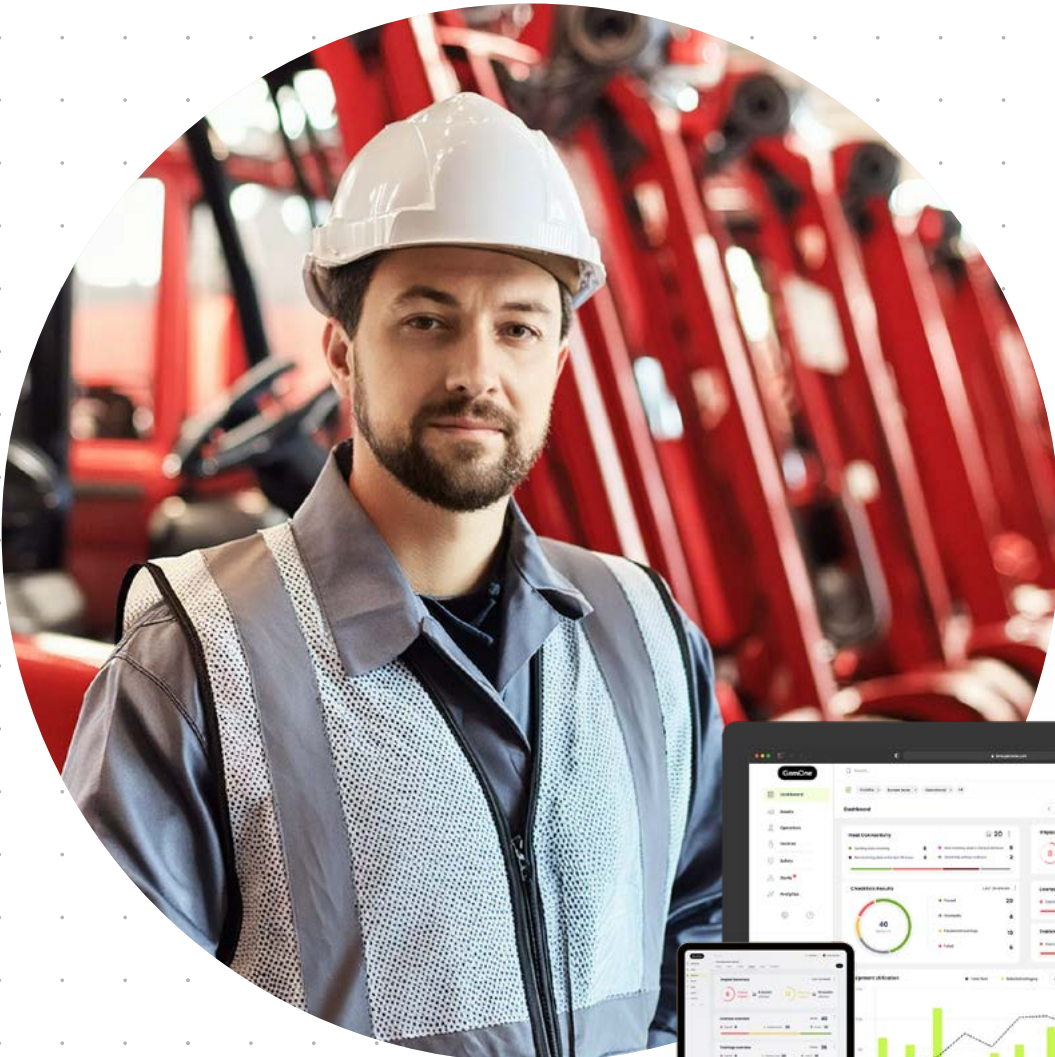


GemOne®

Smart telematics for dealers

Fleet and safety management for material
handling equipment dealerships



The problems we solve for dealers

- ✓ **Minimise machine downtime** and end reactive service.
- ✓ **Tackle slow dealership growth** due to limited customer offerings.
- ✓ **Fix the inefficiencies** of collating fleet data from different telematics providers.



How we help dealers



Make the most of your technicians' time

Monitor equipment and batteries remotely so you can be **more proactive with technical service** and save your business money.



Enhance customer satisfaction by levelling up your offer

Grow your dealership business with **features which boost the safety, security, and efficiency** of your customers' fleets, including fleet utilisation reports, access control, safety checklists, and impact reporting.



Enjoy one solution for all makes and models

Easily connect your entire fleet to one single cloud platform, **integrating different types of trackers**, whether they're from GemOne or another provider.

Our solutions for equipment dealerships



Sapphire:

Fleet and safety management for material handling fleets

Level up your customer offering and grow your dealership business.

Onyx:

Fleet management for mixed fleets

Monitor your rental fleet in real-time.



AI Camera:

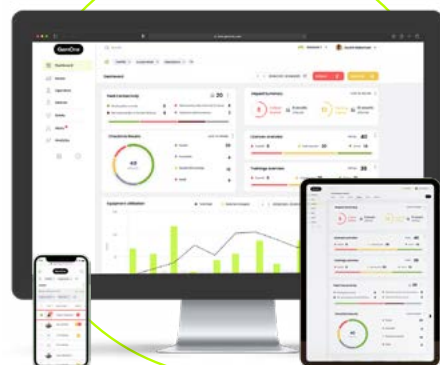
Pedestrian proximity detection

Increase work area safety with pedestrian proximity detection and warnings.

GemOne Cloud:

The single source of truth for fleet data

Actionable business insights for your dealership business.



SOFTWARE

About GemOne

GemOne®

A company of **TVH**

- Global provider of smart telematics solutions, with more than **100,000 assets connected** globally
- Dedicated **customer experience team** for quick and coordinated telematics roll-outs
- Professional services for **worry-free integration** with your business IT systems



Contact us

For more information on any of our new products or services, don't hesitate to reach out to us.

Request a demo:
www.gemone.com/demo

Contact us now:
EMEA: [**sales_emea@gemone.com**](mailto:sales_emea@gemone.com)
Americas: [**sales@gemone.com**](mailto:sales@gemone.com)

Let's get connected:

- 📷 [instagram.com/gemoneofficial](https://www.instagram.com/gemoneofficial)
- 📘 [facebook.com/gemone.telematics](https://www.facebook.com/gemone.telematics)
- 🌐 [linkedin.com/company/gemone](https://www.linkedin.com/company/gemone)
- ✖ x.com/GemOne_
- 📺 [youtube.com/@gemone7046](https://www.youtube.com/@gemone7046)

[**www.gemone.com**](http://www.gemone.com)