

# Checklist:

## Checklist: 10 Ways To Check The Safety And Efficiency Of Your Material Handling Fleet



**Does your warehouse have the tools to succeed in the material handling market in 2025 and beyond?**



In the EU, there are in the region of **500 fatal accidents per year in the transportation and storage sector** (Eurostat).



In the UK, **1 in 5 workplace deaths are caused by a forklift truck or industrial vehicle** (Reporting of Injuries, Diseases and Dangerous Occurrences Regulations).



In Australia, the transportation and warehousing sector recorded 310,000 medically consulted injuries. **Forklift related accidents accounted for 7,290 days away from work** (National Safety Council).



In the USA, the Occupational Health and Safety Administration estimates that **the number of forklift-related accidents alone is nearly 100,000 per year**, and 80% of those accidents involve a pedestrian.



All over the world, warehouses are still one of the most dangerous places to work despite an increased focus on safety amongst staff and on machines.

## Check how you're using technology to make your workplace safer



You know that the risks involved in warehouse work can prove costly for a company in terms of employee's lives, business costs, and operational time.

We've prepared this checklist so you can assess how safe and efficient your material handling fleet is today.

Learn how the latest technology can save your business time and money, and provide a safer working environment for your employees.



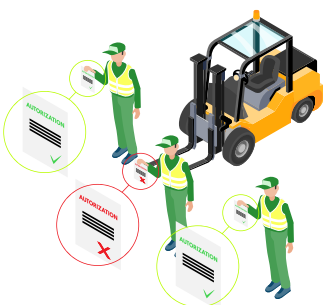
## 01 Do you use reliable, regulation-compliant, operator safety checklists?

**On-screen Safety Checklists** make pre- and post-start checks mandatory, with operator lock-out if there's a critical issue. No clipboards. No illegible writing. No paper. Just a safe fleet, every day.



## 02 Do you lack oversight on reported impacts? Do alerts help you to avoid collisions?

Instant **Impact Reporting** gives you notifications of impacts so you can identify which operators and areas are most prone to incidents, including data such as the impact force, direction of the impact, and the operator involved. And with **360° Proximity Warning**, you are equipped with the alerts and actionable insights you need to reduce forklift incidents.



## 03 Are the right operators using your machines all the time?

**Operator Access Control** enables you to give access to your machines only to approved operators via a PIN code, RFID card, or fob. You can choose who you want to operate each machine, based on your own criteria of certifications and training.



## Is there uncertified use of machines in your warehouse?

With **Operator Certification Management** you can ensure that operators using your machines always comply with the appropriate safety inspections and training requirements.



## Do you know which machines in your fleet work the most?

With **Hours Meter Reporting**, you can see exactly how long your machines are used and get all the data you need at your fingertips to make smarter business decisions about optimal fleet composition.



## Do you really know how your machines are being operated?

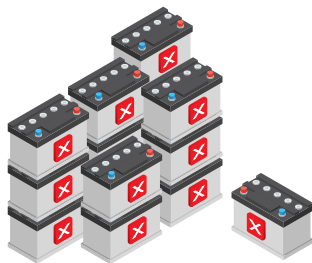
With **Session Reporting** and **GPS tracking**, you can monitor the activity of operators on a daily basis to gain insights on efficiencies and how your machines are being operated.



## 07 Do you ever miss periodic maintenance deadlines for machines? Or experience breakdowns?

### Automatic Service Estimation Notifications

save your technicians precious time on periodic maintenance and provide them with all the information they need for a quick and accurate intervention. Functionalities such as **Impact Detection** and **Asset Utilisation** enable preventive maintenance and help you minimise breakdowns and downtime.



## 08 Are you spending a fortune replacing expensive industrial batteries?

With **Battery Monitoring**, you can monitor various parameters on your expensive industrial batteries, avoiding unnecessary wear of your batteries, maximising their charge cycles, and prolonging battery lifespan.



## 09 Do you suffer from dangerous blind spots in operator visibility?

With **Cameras**, you can prevent equipment damage, increase productivity, reduce operator fatigue and stress, shorten training time for new drivers, and increase work area safety.



## Are your forklifts sometimes overloaded?

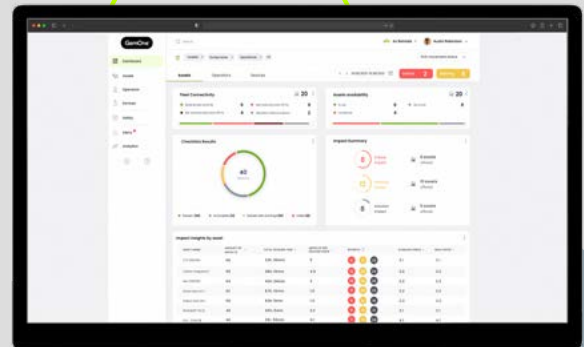


With a **Forklift Weight Scale**, know the weight of your load, at any time; receive alerts when forklifts surpass weight limits set by you; and track how long operators drive with loads on their forklifts.

At GemOne, our smart telematics systems can empower you to make all of the cost and time-saving insights above.

We deliver a system that meets your company's needs today and responds to the challenges your business will face tomorrow.

Discover how GemOne telematics can make your industrial fleet safer and more efficient.



Visit us at [gemone.com/en/products-sapphire](https://gemone.com/en/products-sapphire)