

GemOne®

Proximity Warning Solution

*Powered by **Lopos***

Forklifts are vital to your business, but they introduce risk to the workplace. Our 360° proximity warning system equips you with the alerts and actionable insights you need to reduce forklift incidents and make your workplace environment safer.



How it works

The alerts

Receive immediate feedback when a proximity perimeter is breached through alerts in a variety of formats: audible, vibrations and bright LED light.

The tech

Forklifts are equipped with a “beacon” and workers with a “wearable”. These devices communicate with each other using ultra-wideband technology.

The insights

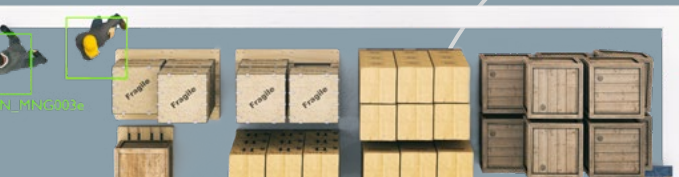
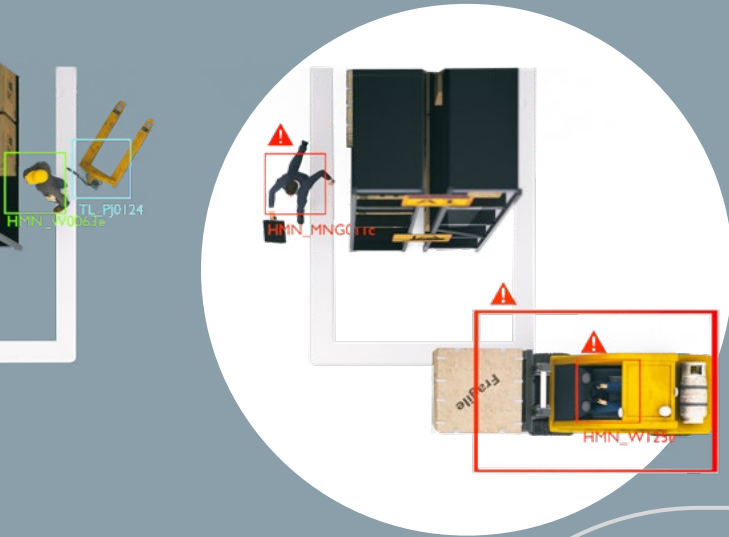
Gather actionable insights through our online platform to improve overall safety and reduce incidents in the warehouse.



Reduce forklift incidents and make your workplace safer

Many workplace accidents involve a forklift. Because of this, warehouse insurance policies increase year on year. Absenteeism due to incidents has become a major issue. Training doesn't seem to help. The costs to both human life and to businesses can be significant.

Our proximity warning system integrates seamlessly with GemOne's telematics or works as a standalone solution so you can reduce incidents and enhance safety.



Features

For every forklift



Our solution works on every forklift, no matter the type or brand, both in your warehouse and outside.

Easy installation



It requires no additional infrastructure and is designed to integrate into your current or future GemOne telematics system.

No blind spots



With our 360° proximity detection, you'll receive alerts no matter where you are located around the forklift.

Totally configurable



Turn the alert sounds and light warnings on or off as you prefer and customise the detection range in line with your own safety policies.

Online Platform



See reports on an online cloud platform so you can gather insights in real-time.

Specifications

Conformity & Certifications: CE, FCC, RoHS
Distance measurement accuracy: \approx 7.87 inches (UWB)
Operating temp: -4°F to +140°F

Wearable



Power supply:
5V, 500mA
Magnetic charging port
Types of alarm:
Sound (max 100dB), Vibration and LED
Battery duration:
2-5 days
Charging time:
90 min
Dimensions:
1.8 × 1.8 × 0.75 inches
Weight:
 \approx 1.25 ounces
Water resistance:
Plastic IP64

Beacon



Power supply:
Powered through battery:
12-36V (up to 80V with DC/DC converter).
Types of alarm:
Sound (max 100dB) and LED
Connectivity:
WiFi 802.11 b/g/n - Bluetooth:
5.2 - RS232/CAN
Dimensions:
11 × 3.9 × 2.5 inches
Weight:
 \approx 14 ounces
Water resistance:
Plastic IP67

Forklift to workers alerts

Keep workers safe when forklifts come too close

Forklift to forklift alerts

Minimise damage to your machinery

Other equipment and assets

Make your entire workplace environment safer

Request a demo:

www.gemone.com/demo

Contact us now:

info@gemone.com



Lets get connected:

- 📷 [instagram.com/gemoneofficial](https://www.instagram.com/gemoneofficial)
- 📘 [facebook.com/gemone.telematics](https://www.facebook.com/gemone.telematics)
- 🌐 [linkedin.com/company/gemone](https://www.linkedin.com/company/gemone)
- 🐦 twitter.com/GemOne_

www.gemone.com

GemOne®