

GemOne®

Sapphire

Fleet and safety management
for material handling fleets



The smart telematics solution
for industrial fleet owners
& equipment dealerships

Sapphire for intra-logistics:



Make your warehouse safer and more efficient

- Enhance warehouse safety and compliance
- Streamline operator management
- Boost fleet efficiency and performance

Sapphire for material handling dealerships:

Grow your dealership business

- Enhance customer satisfaction by levelling up your offer
- Make the most of your technicians' time
- Enjoy one solution for all makes and models



Sapphire is a fleet and safety management solution that gives you invaluable insights about your forklift fleet — **on any device, at any time**

How it works :



Automated Safety Checklists:

Mandatory on-screen pre-start checks, with instant lockout if there's a critical issue.



Impact Reporting:

Instant notifications of impacts so you can identify which operators and areas are most prone to incidents.



Access Control:

Choose who you want to operate each machine with access control via PIN code, RFID card, or fob (based on your own criteria of certifications and training).



Session Reporting:

Monitor the activity of operators on a daily basis to gain insights on efficiencies and use reports to reward safe, productive driving behaviour.



Hours Meters Reporting:

See exactly how long your machines are used and use that data to make smarter business decisions about optimal fleet composition.



License Management:

Ensure that operators using your machines always comply with the appropriate inspections, training, and licensing requirements.



Forklift Load Sensor:

Prevent overloading of your forklifts. More quickly determine weights. Work more precisely.



Forklift Cameras:

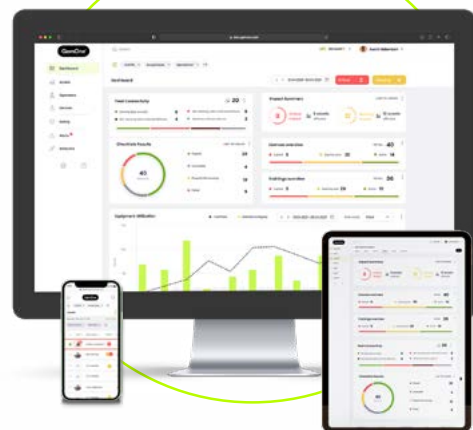
Get rid of dangerous blind spots in your forklift operators' visibility and streamline incident investigation.

GemOne Cloud:

The single source of truth for fleet data

Actionable business insights for your fleet

Connect any make or model of machine, add any tracker from any provider, and integrate seamlessly with your existing business IT systems.



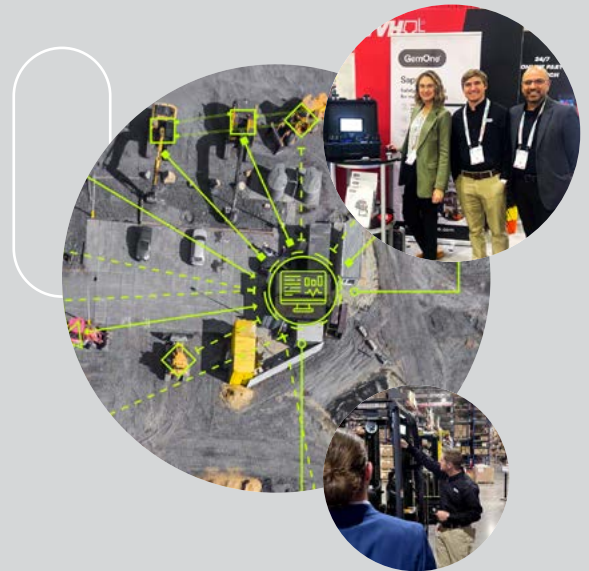
SOFTWARE

About GemOne

GemOne[®]

A company of **TVH**

- Global provider of smart telematics solutions, with more than **100,000 assets connected** globally
- Dedicated **customer experience team** for quick and coordinated telematics roll-outs
- Professional services for **worry-free integration** with your business IT systems



Contact us

For more information on any of our new products or services, don't hesitate to reach out to us.

Request a demo:
www.gemone.com/demo

Contact us now:
EMEA: sales_emea@gemone.com
Americas: sales@gemone.com

Lets get connected:

- 📷 [instagram.com/gemoneofficial](https://www.instagram.com/gemoneofficial)
- 📘 [facebook.com/gemone.telematics](https://www.facebook.com/gemone.telematics)
- 🌐 [linkedin.com/company/gemone](https://www.linkedin.com/company/gemone)
- ✖ x.com/GemOne_
- 📺 [youtube.com/@gemone7046](https://www.youtube.com/@gemone7046)

www.gemone.com